

TEST REPORT

SAMPLE INFORMATION

- Applicant** : Dongguan Aibei Silicone Products Co., Ltd.
- Address** : Room 303, Building 3, No. 11, Dongqiao 1st Road, Tianliao, Shipai Town, Dongguan City, Guangdong Province.
- Manufacturer** : Dongguan Aibei Silicone Products Co., Ltd.
- Address** : Room 303, Building 3, No. 11, Dongqiao 1st Road, Tianliao, Shipai Town, Dongguan City, Guangdong Province.
- Sample Name** : TPE DOLL
- Type No** : AIBEI, 65cm, 70cm, 78cm, 81cm, 85cm, 88cm, 100cm, 105cm, 110cm, 115cm, 125cm, 128cm, 130cm, 135cm, 138cm, 148cm, 151cm, 153cm, 158cm, 159cm, 160cm, 161cm, 162cm, 163cm, 164cm, 165cm, 166cm, 168cm, 169cm, 170cm, 171cm, 176cm
- Brand Name** : AIBEI
- Received Date** : 2022-07-25
- Testing Period** : 2022-07-25 to 2022-08-02

REMARKS

- The test report is valid for above tested sample only and shall not be reproduced in part without written approval of the company.
- Characterization & Condition of sample: Normal.
- Ambient Condition During Testing: (15~22)°C, (20~40)% RH.

CONCLUSION

The submitted samples passed

EN 71 Part 1: 2014+A1:2018; Mechanical and Physical Properties

EN 71 Part 2: 2020; Flammability

EN 71 Part 3: 2019+A1:2021. Migration of Certain Elements

This statement is based upon the testing of the submitted samples. It is incumbent on the manufacturer to assure the constant quality of the product.

Test/Witness Engineer :



Approved & Authorized :

Andy Zhang

Test Result(s):

◆ Mechanical and physical properties

As specified in European Standard on Safety of Toys EN 71 Part 1: 2014+A1:2018;

Clause	Description	Assessment
4	General requirements	Pass
4.1	Material cleanliness	Pass
4.7	Edges	Pass
6	Remark: The packaging of toys shall conform to the following requirements: a) Bags made of flexible plastics with an opening perimeter greater than 380 mm used for external or internal packaging, shall have an average sheet thickness of 0,038 mm or more when tested according to 8.25.1 (plastic sheeting, thickness). b) Bags made of flexible plastics with an opening perimeter greater than 380 mm shall not have a drawstring or cord as a means of closing. The requirements in 5.10 (small balls) apply to packaging and c) packaging components that are small balls regardless of the intended agegroup of the toy. d) Regardless of the intended age group of the toy, any separable part of its packaging, which is a small ball or that has a cylindrical shape with a rounded end shall not pass entirely through template E when tested according to 8.32.1 (small balls and suction cups). This requirement does not apply to parts with a major dimension of 64 mm or more, or parts that are attached to another part of the packaging with an attachment that does not break when tested according to 8.3 (torque test) and 8.4.2.1 (tension test, general). e) The requirements in 5.12 (hemispheric shaped toys) apply to hemispheric- shaped containers that are part of the packaging for toys intended for children under three.	Pass

Clause	Description	Assessment
7	<p>Warnings and instructions for use</p> <p>Remark:</p> <p>Toys made available on the market shall bear the CE marking. The CE marking shall be affixed visibly, legibly and indelibly to the toy, to an affixed label or to the packaging. In the case of small toys and toys consisting of small parts, the CE marking may alternatively be affixed to a label or an accompanying leaflet. Where specific legislation does not impose specific dimensions, the CE marking shall be at least 5 mm high.</p> <p>—The manufacturer’s name, registered trade name or registered trade mark and the address at which the manufacturer can be contacted shall be indicated on the toy or, where that is not possible, on its packaging or in a document accompanying the toy. This requirement applies also to the name and address etc. of any importer.</p> <p>—Manufacturers shall ensure that their toys bear a type, batch, serial or model number or other element allowing their identification, or where the size or nature of the toy does not allow it, that the required information is provided on the packaging or in a document accompanying the toy.</p> <p>—Manufacturers and importers shall ensure that the toy is accompanied by instructions and safety information in a language or languages easily understood by consumers, as determined by the Member State concerned.</p> <p>—A Member State may, within its territory, stipulate that warnings and safety instructions shall be written in a language or languages easily understood by consumers, as determined by that Member State.</p>	Pass
7.1	<p>General</p> <p>Remark: Warnings on toys shall not be misleading or incorrect. Toys intended for children under 36 months shall comply with the requirements in Clause 5 of this standard. A warning on a toy or its packaging does not release the manufacturer or his authorized representative from the obligation to meet these requirements. The warnings shall be preceded by the words ‘Warning’ or ‘Warnings’, as appropriate.</p>	N/A
7.2	<p>Toys not intended for children under 36 months</p> <p>Remark: Toys which are not intended for, but might be dangerous for children under 36 months shall bear a warning, for example: “Not suitable for children under 36 months” or “Not suitable for children under three years” together with a brief indication of the specific hazard calling for this restriction. The age warning shall be clearly legible at the point of sale of the product and appear either on the toy itself or on its retail packaging. The indication of the specific hazard may appear on a leaflet or in the instructions for use.</p>	Pass

Note:

-Only applicable clause(s) was/ were shown.

◆ Flammability of toys

As specified in European Standard on Safety of Toys EN 71 Part 2: 2020.

Clause	Description	Assessment
4.1	General	Pass

Note:

4.1 The following materials shall not be used in the manufacture of toys:

– Celluloid (cellulose nitrate), except when used in varnish, paint or glue, or in balls of the type used for table tennis or similar games, and materials with the same behaviour in fire as celluloid. Specific materials

to which the test flame is applied in order to check compliance of the toy with requirements in 4.2 to 4.5 are considered to comply with this requirement if the toy meets its appropriate requirements in 4.2 to 4.5;

– Materials with a piled surface which produce surface flash on the approach of a flame. Piled surfaces showing no momentary area of flame over the area of the piled surface remote from the test flame are considered to meet this requirement;

– Highly flammable solids.

In addition, toys shall not contain flammable gases, highly flammable liquids, flammable liquids, flammable gels except as provided for below:

– Flammable liquids, flammable gels and preparations supplied in sealed containers having a maximum

volume of 15 ml per container;

– Highly flammable liquids and flammable liquids being entirely retained within a porous material in capillary channels of writing instruments;

– Flammable liquids with a viscosity greater than $260 \times 10^{-6} \text{m}^2/\text{s}$ corresponding to a flow time of more than 38 s when determined in accordance with EN ISO 2431 using cup No. 6;

– Highly flammable liquids contained in toys covered in EN 71-5.

NOTE: Different legal requirements may exist in non-EU countries.

◆ Migration of certain elements

As specified in European standard on safety of toys EN 71 Part 3: 2019+A1:2021. - Migration of certain elements, acid

extraction method was used and toxic elements content were determined by ICP-OES, ICP-MS, HPLC-ICP-MS and GC-MS.

For Category III materials: Scraped off materials

Test Results:

TESTING ITEMS		ASSESSMENT
Coatings of paint, varnish, lacquer, printing ink, polymer and Similar coatings.		PASS
(1):	Skin colour paint	PASS
(2):	Pink paint	PASS

Result in mg/kg

In dry, brittle, powder-like or pliable toy material, the migration limits for toys or components of toys, shall not be exceeded:

Element	(1)	(2)	Limit (mg/kg)
Aluminium	<100	<100	5625
Antimony	<1	<1	45
Arsenic	<0.01	<0.01	3.8
Barium	<100	<100	4500
Boron	<10	<10	1200
Cadmium	<0.01	<0.01	1.3
Chromium (III)	<0.1	<0.1	37.5
Chromium (VI)	<0.001	<0.001	0.02
Cobalt	<0.1	<0.1	10.5
Copper	<10	<10	622.5
Lead	<1	<1	13.5
Manganese	<10	<10	1200
Mercury	<0.01	<0.01	7.5
Nickel	<0.1	<0.1	75
Selenium	<0.1	<0.1	37.5
Strontium	<100	<100	4500
Tin	<100	<100	15000
Organic tin	<0.01	<0.01	0.9
Zinc	<100	<100	3750

Remark: < = Less than

“N/A” means “Not applicable.”

The analytical results were not adjusted by subtracting the analytical correction.

Heavy Metal Element Analysis was performed by Inductively Coupled Plasma Spectrometry.

Only applicable clauses were shown.

Photograph of Sample

Photo 1 Appearance of EUT

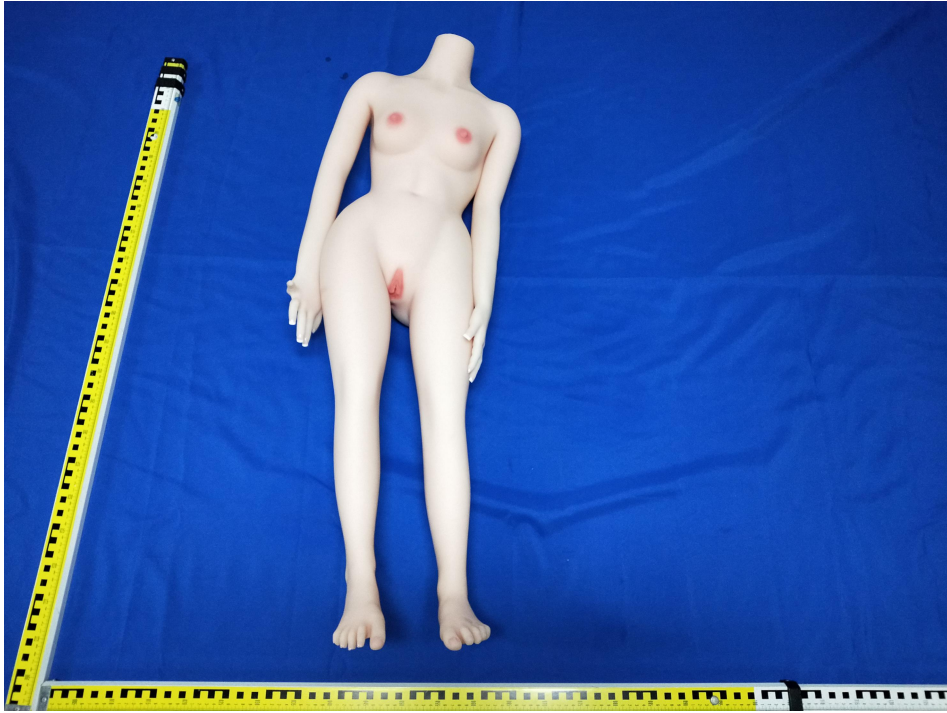


Photo 2 Appearance of EUT



Photo 3 Appearance of EUT

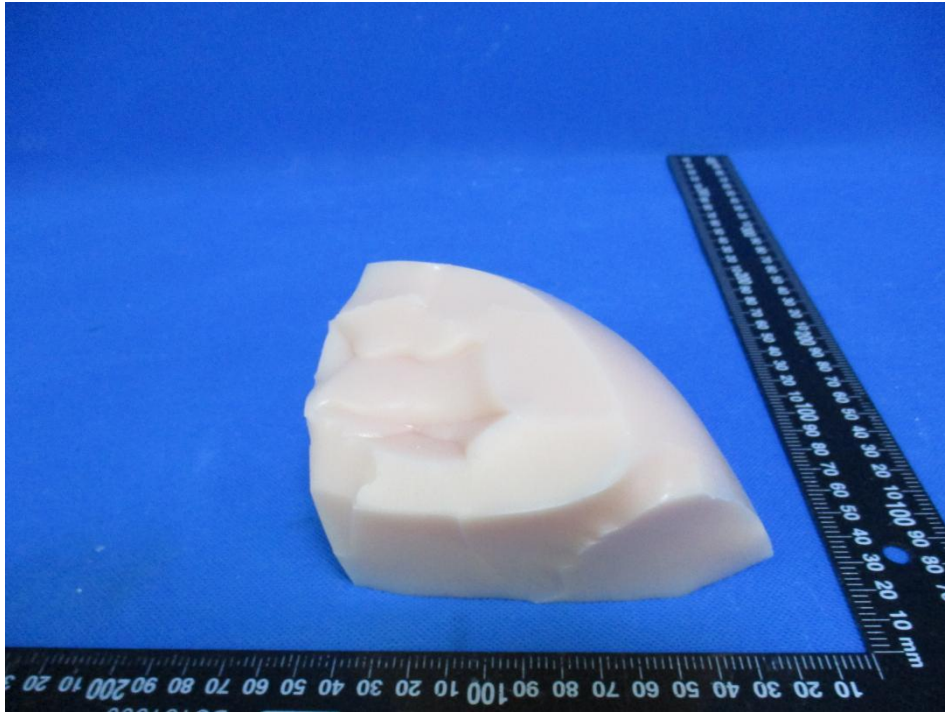


Photo 4 Warning Sign



END OF REPORT